



Bathing establishment Fact sheet

Name of bathing establishment	PRINCIPE
Address	Via Arenile 15
City	Forte dei Marmi
Contacts	Telephone +39 0584 80264 – cell.+39 320 047 0188 Email bagnoprincipe@gmail.com
Website	Not detected

TESTED BY: [Handy Superabile Social Promotion Association](#) in summer 2023

Please note The following information refers to the verification date shown at the bottom of each sheet. The Association is not responsible for any significant changes made to the property after the visit.

Summary

Bathing establishment Fact Sheet	1
Arrival at the facility	2
Private/public parking.....	2
Pathway from the parking lot to the main entrance	2
Reception welcome.....	3
Bar/restaurant	4
Internal Pathways and common services.....	5
Internal Pathways	5
Toilet and shower accessible to guests with reduced mobility	6
Changing room	7
Beach.....	8
Children's play area	8
Pool.....	9
Medical practices/health facilities.....	9



Project carried out with the contribution of





Arrival at the facility

Private/public parking

Presence of private parking	NO
Public parking nearby	YES
Fund type of public car park	asphalt
Presence of parking space reserved for people with disabilities	NO
	

Pathway from the parking lot to the main entrance

Pathway from the parking lot to the entrance	on level ground, passing a gravel stretch and then at the entrance two small steps of 2 cm and 3 cm with a 68 cm long platform. width greater than 90 cm, height difference 10 cm, slope 15%
There are indicators and tactile maps	NO
Useful width of door/entrance passage	greater than 90 cm





Reception welcome

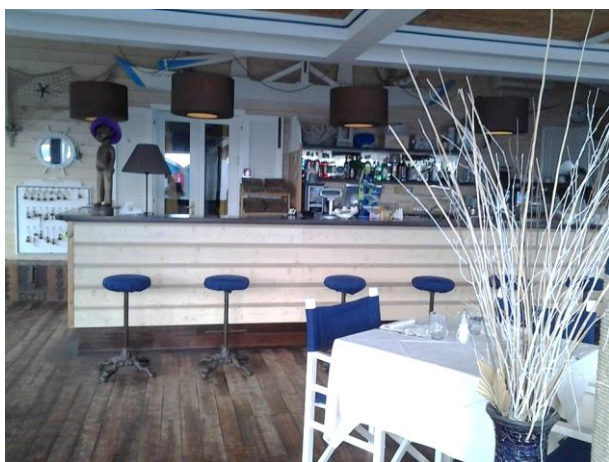
Umbrella booking system	<input type="checkbox"/> Via the web <input checked="" type="checkbox"/> Via telephone <input checked="" type="checkbox"/> On site
Presence of multilingual staff	YES
Presence of plant plan with legend of services available	NO
Presence of visuo-tactile map	NO
Noticeboard/information panel sat an average height of 130 cm in a well-lit area and a character size of at least 14 dpi with a contrast ratio greater than 4.5:1	NO
The staff has undergone training on welcoming people with various disabilities	NO





Bar/restaurant

Type of venue	Bar/restaurant
Access to the venue	flat
Useful width of door/entrance passage	greater than 90 cm
Bar counter	greater than 100 cm
Type of tables	with central support
Space under the floor tables	greater than 70 cm
Multilingual menu	not detected
Menu with large print characters	NO
Braille menu	NO
Table service for people with disabilities	YES
Availability of food for celiacs	<input type="checkbox"/> bread <input type="checkbox"/> pasta <input type="checkbox"/> cookies <input type="checkbox"/> ice creams <input type="checkbox"/> pre-packaged foods



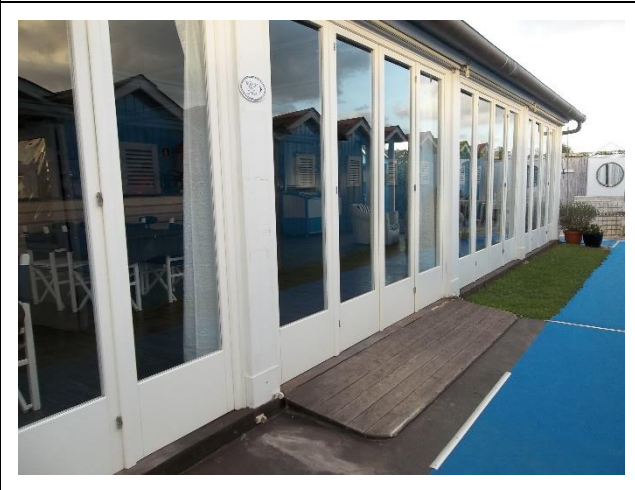
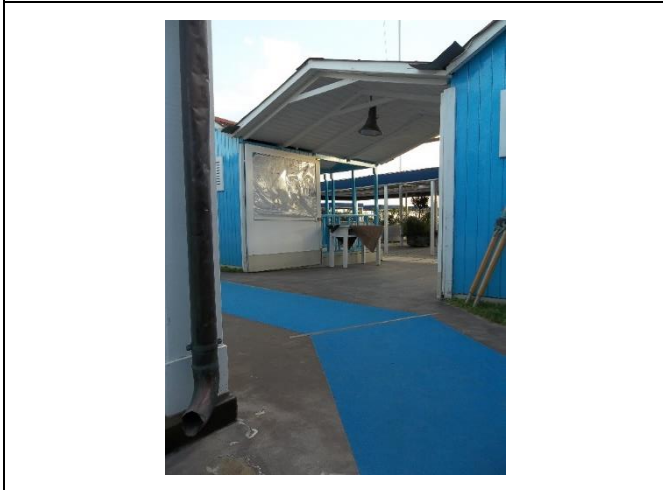


Internal Pathways and common services

Internal Pathways


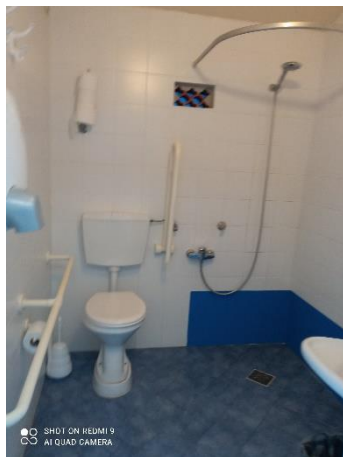
Indicate whether the pathways connecting the entrance to the beach are flat or with ramps in addition to those already described

flat Pathways





Toilet and shower accessible to guests with reduced mobility

Number of toilets accessible/usable by guests with reduced mobility	1
Access to the venue	flat
Useful width of entrance door	85cm
Toilet height	50cm
Open front toilet seat	YES
Support handles	on both sides
Flexible shower next to the toilet	YES
Free space on the sides of the toilet	to the left greater than 90 cm To the right 25cm Front greater than 90 cm
Electric bell/telephone	NO
Washbasin with space underneath for a wheelchair	65cm
Height from the ground to the lower edge of the mirror	sufficient for use by a person in a wheelchair
Baby changing table	NO
	
Shower accessible to guests with reduced mobility available	YES in common with the toilet room
Shower type	open type


Project carried out with the contribution of





Floor-level shower	YES
Shower chair	missing
Support handle	missing
Presence of shower head or latch	fixed shower headwith flexible shower
Electric bell/telephone	NO



Changing room

Changing room accessible to guests with reduced mobility available	YES
Access to the venue	flat
Useful width of door/entrance passage	85cm
Dimensions of the changing room	sufficient for guest maneuvering in a wheelchair
Presence of cot	NO
Coat stand height from the floor	missing coat hanger
	





Beach

Type of beach	sand
Access to the beach	flat
Walkway to reach the umbrellas	YES
Type of walkway	PVC
Walkway width	90cm
	
Removable Platform between the walkway and the umbrella station to facilitate the passage and parking wheelchair	YES
Amphibious beach chair available for helping people with reduced mobility to enjoy swimming (owned by the establishment or by association)	YES

Children's play area

Children's play area	missing
----------------------	---------





Pool

The property has a swimming pool	NO
----------------------------------	----

Medical practices/health facilities

Hospitals near the facility	Versilia Hospital SS 1, 335, 55049 Camaiole LU Telephone: 0584 6051
Other healthcare facilities	ASL Health District No. 12 Viareggio Via Sant'Elme, 30 Tel. 058483873 Green Cross Viale Italiceo, corner the via Risorgimento Tel. 058484013 Free first aid for white codes Night medical guard Tel. 0584 83896 (8pm-8am) Mercy Via PI da Carrara, 32 Tel. 0584752133/0584 752149 Medical service "San Camillo" nursing home Via PI da Carrara, 37 Tel. 0584 7391 Dialysis service Green Cross Viale Italiceo, corner the via Risorgimento Tel.058484013 affiliated with AUSL

TESTED BY: Handy Superabile - Social Promotion Association - in summer 2023

